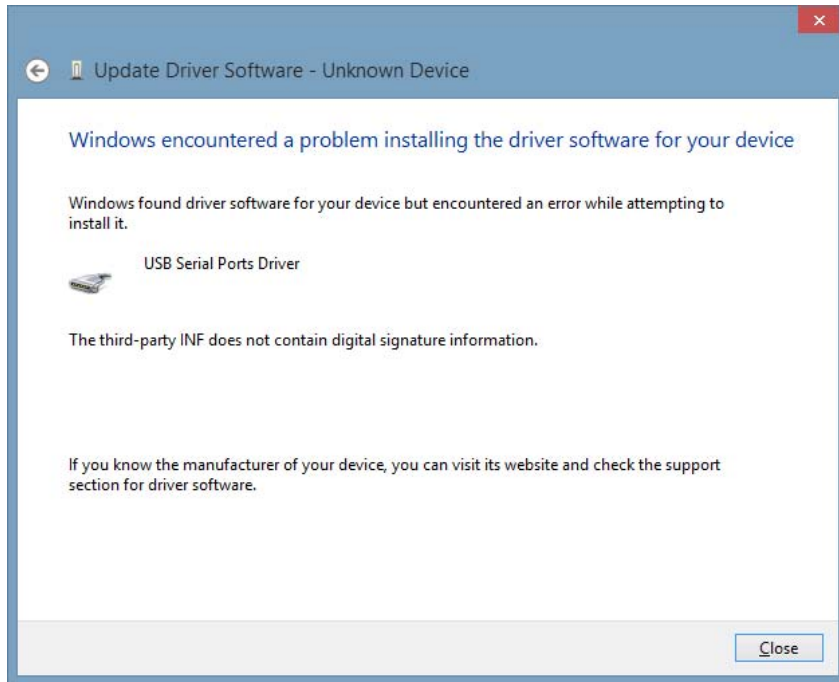


## 1) How to release the Unsigned Driver in Windows 8 / 8.1 and 10.

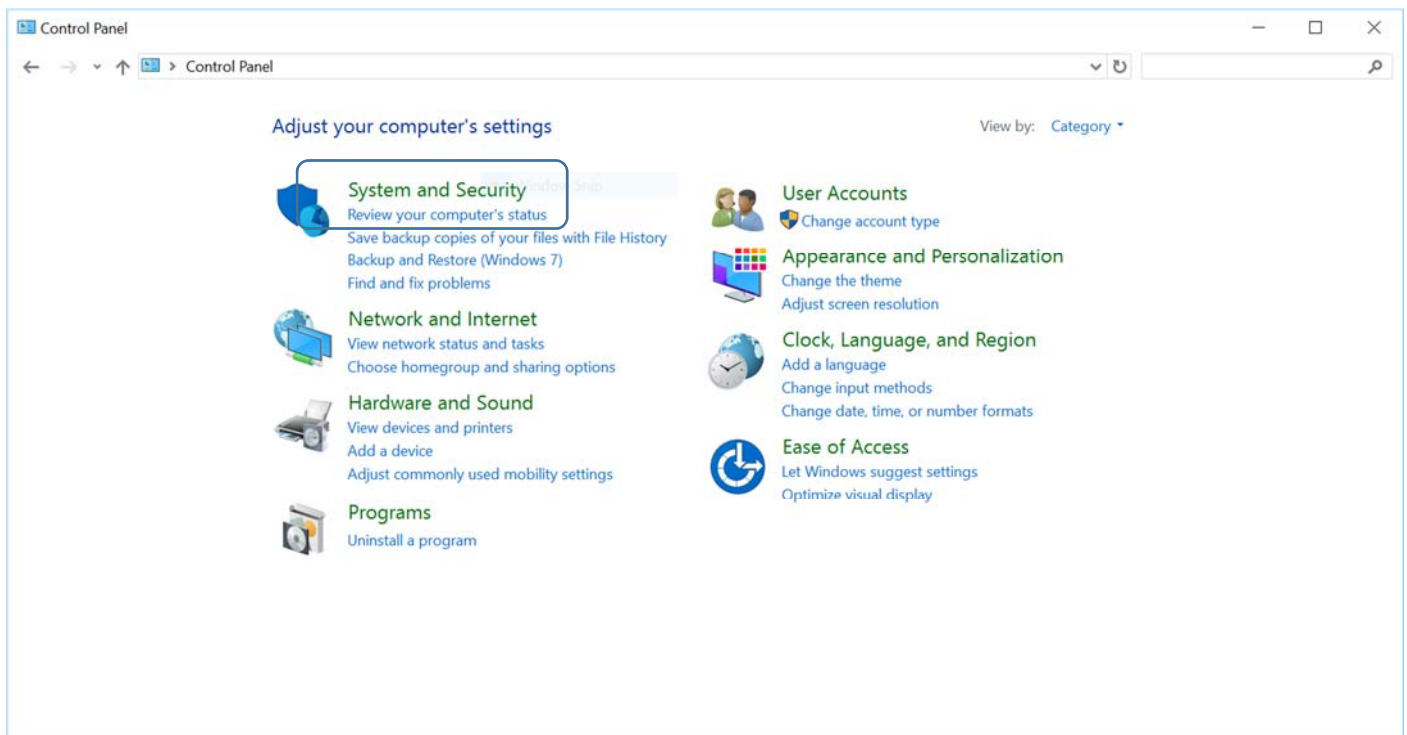
\*If you already released this, skip to page 6, 2) Install USB driver.

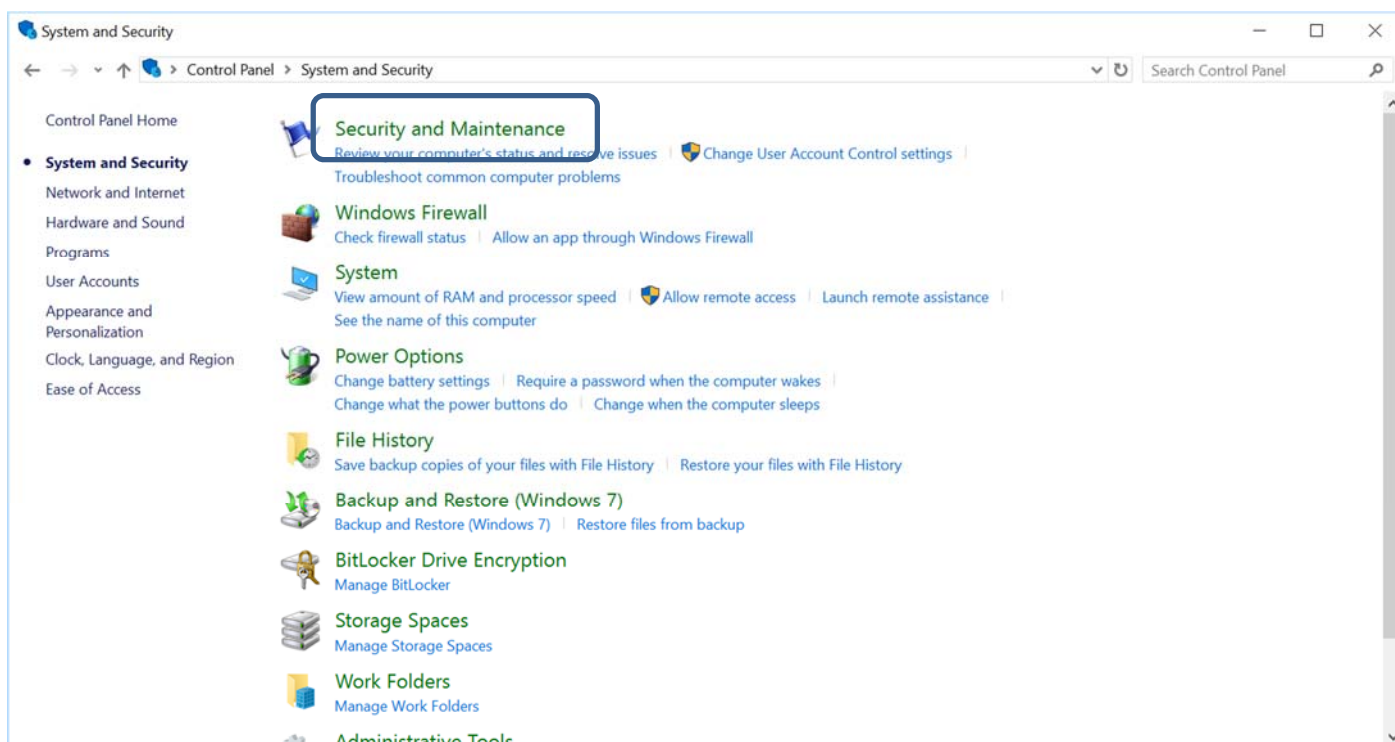
Windows 8 / 8.1 and 10 don't let you install unsigned drivers. The following message appears during installation unsigned drivers.



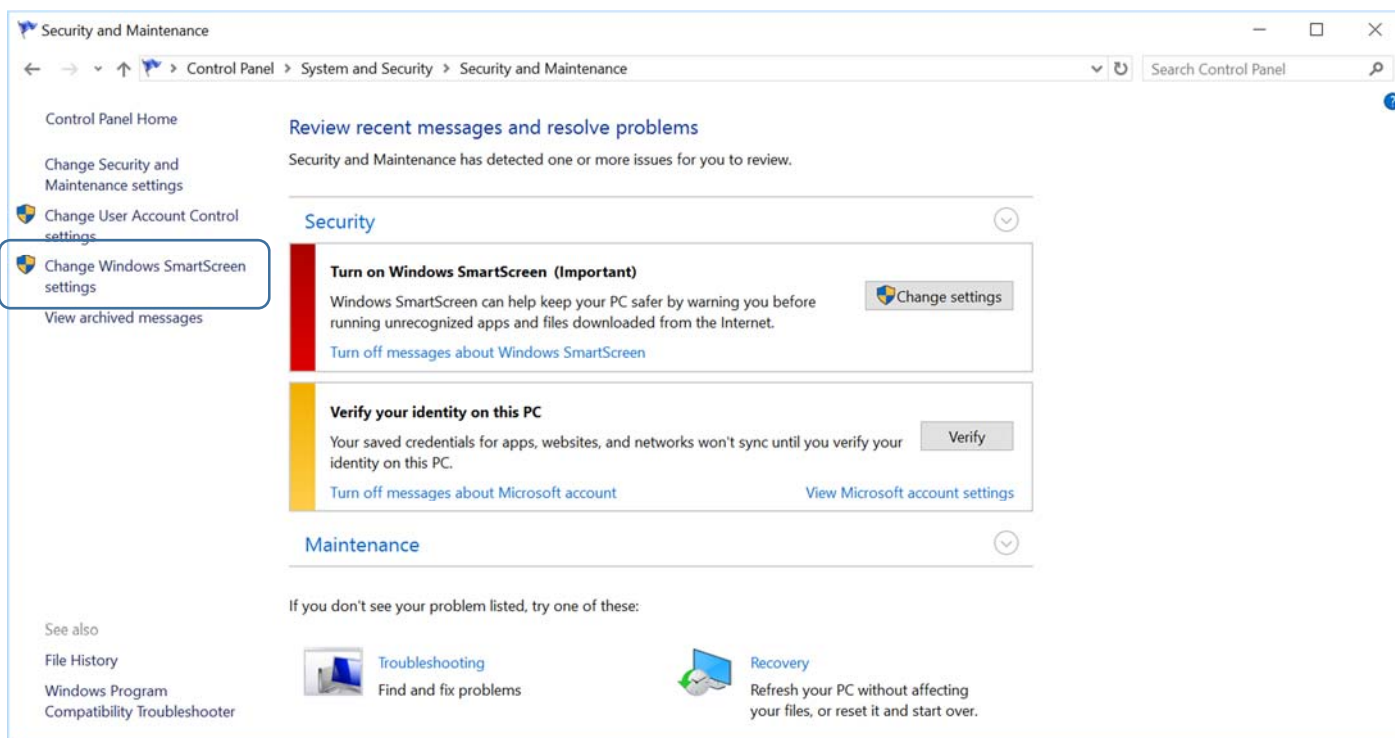
In order to install the MB2 driver, follow the steps below to execute \*Disable Driver Signature Enforcement\* mode.

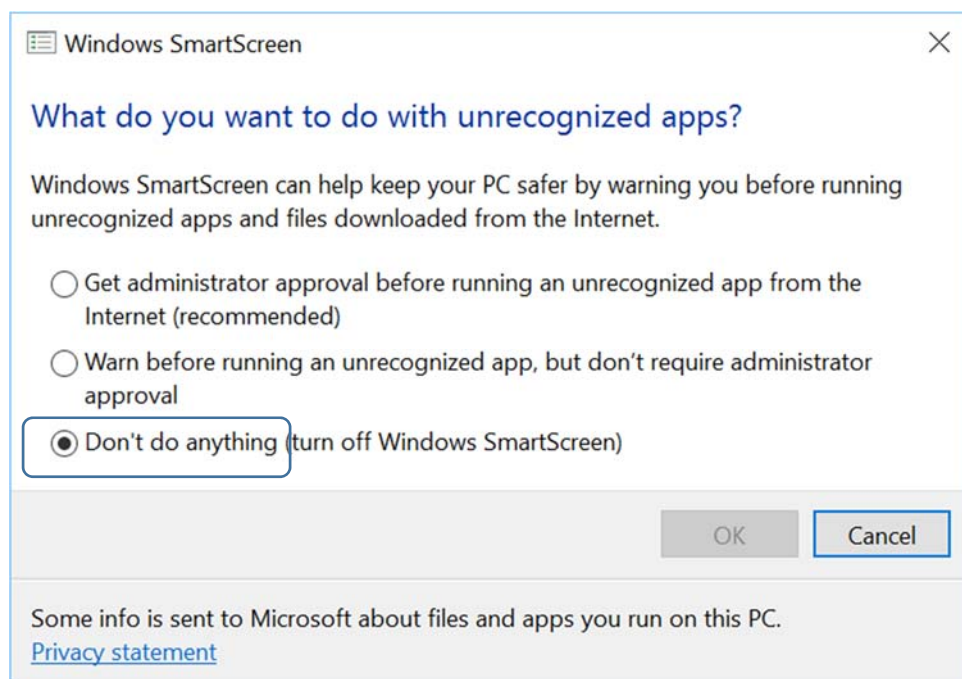
1. Go to "Control Panel Home" → "System and Security" → "Security and Maintenance" or "Action Center"



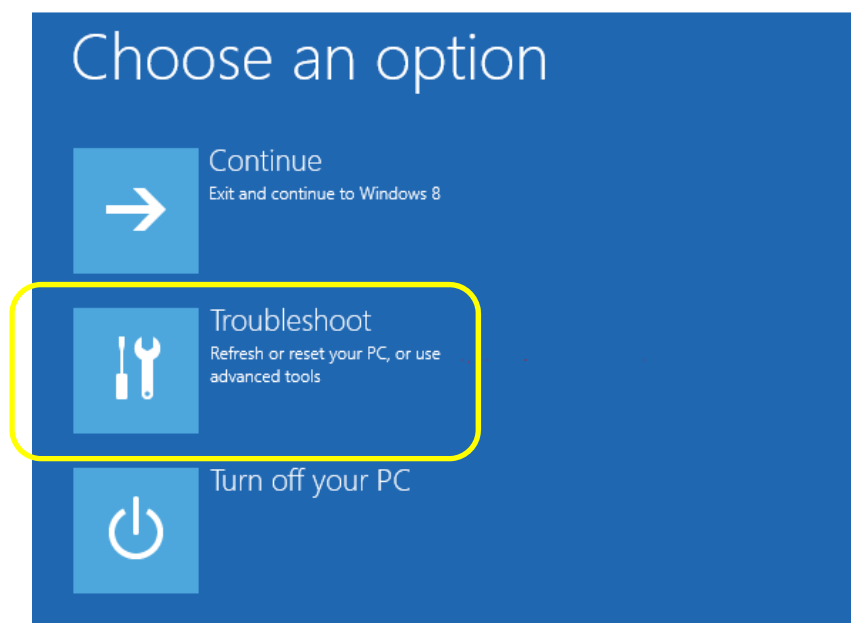


2. Click “Change Windows SmartScreen settings” and choose the bottom “Don’t do anything (turn off Windows SmartScreen)” and click “OK” button





3. Select "Restart" from the power options menu and hold down the "SHIFT" key while you click Restart. Otherwise go to "Settings" → "Update & security" → "Recovery" → "Restart now" in the Advanced startup. Once your computer has rebooted you will be able to choose the Troubleshoot option. Go to "Troubleshoot" → "Advanced options" → "Startup Settings" → "Restart"



## ← Troubleshoot



### Refresh your PC

If your PC isn't running well, you can refresh it without losing your files



### Reset your PC

If you want to remove all of your files, you can reset your PC completely



### Advanced options

## ← Advanced options



### System Restore

Use a restore point recorded on your PC to restore Windows



### Command Prompt

Use the Command Prompt for advanced troubleshooting



### System Image Recovery

Recover Windows using a specific system image file



### Startup Settings

Change Windows startup behavior



### Automatic Repair

Fix problems that keep Windows from loading

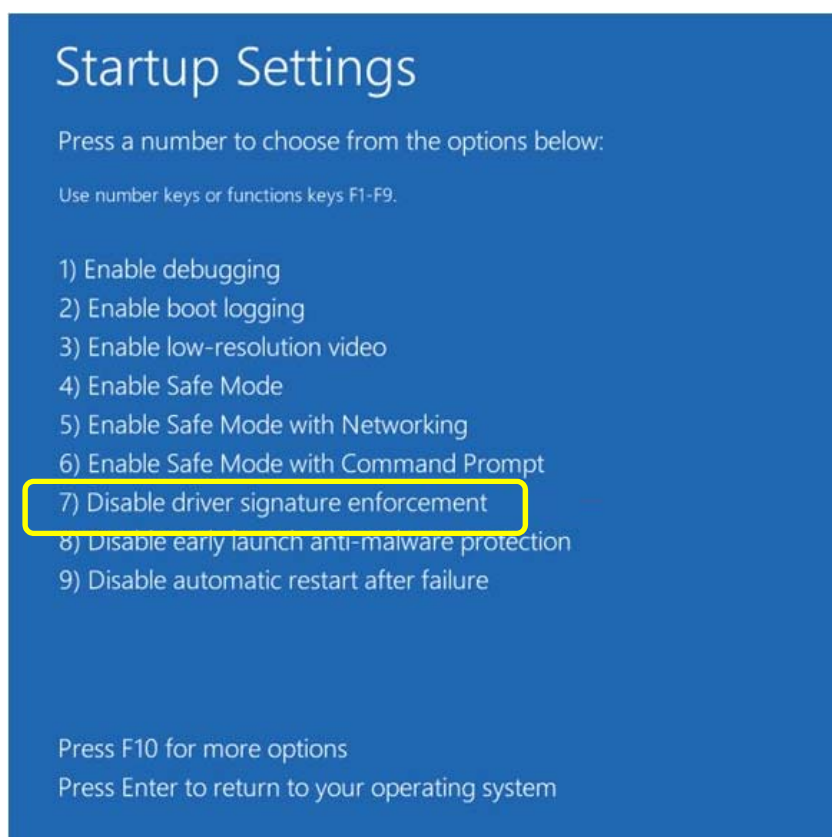
## ← Startup Settings

Restart to change Windows options such as:

- Enable low-resolution video mode
- Enable debugging mode
- Enable boot logging
- Enable Safe Mode
- Disable driver signature enforcement
- Disable early-launch anti-malware protection
- Disable automatic restart on system failure

Restart

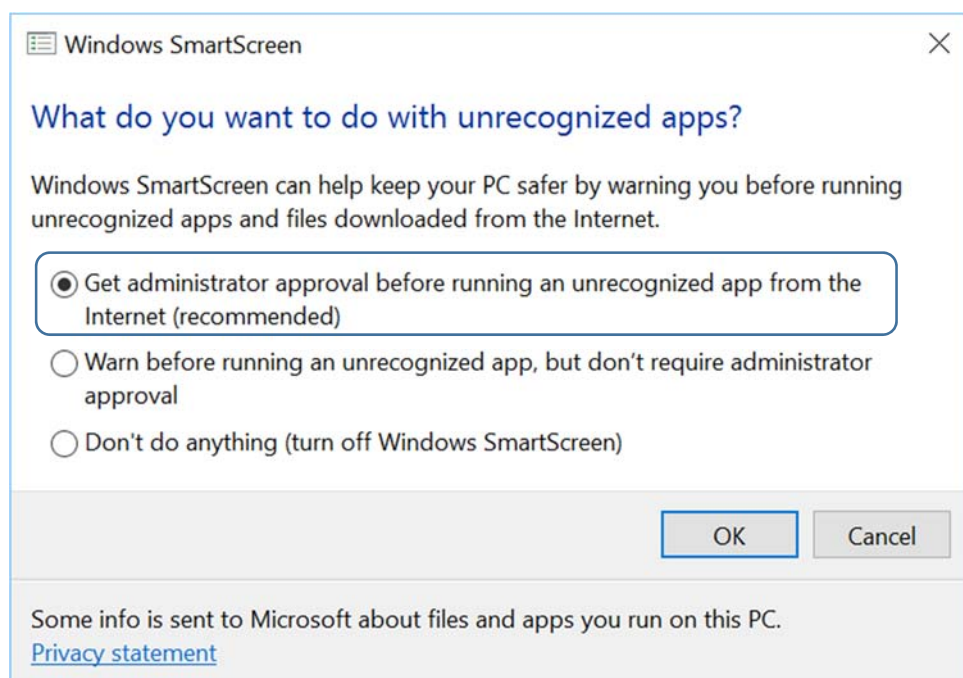
4. During restarting, the following “Startup Settings” menu comes up and select “7) Disable driver signature enforcement” by pushing keyboard 7.



The MB2 USB driver now can install, refer to “Quick Setup Guide”.

After finish the installation of MB2 USB driver, we recommend you back to the default setting.

Back to “Control Panel” → “System and Security” → “System and Maintenance” or “Action Center” → “Change Windows SmartScreen settings” and choose “Get administrator approval……” and click “OK” button.

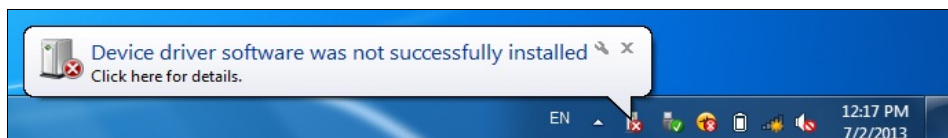


## 2) Install USB driver

**Important : Please set to off internet line during installation of the USB driver to avoid auto update.**

1. Connect a USB cable between MB2 controller and PC, and turn on the power of the MB2 controller. Start plug-and-play automatically and the following messages should be appeared.

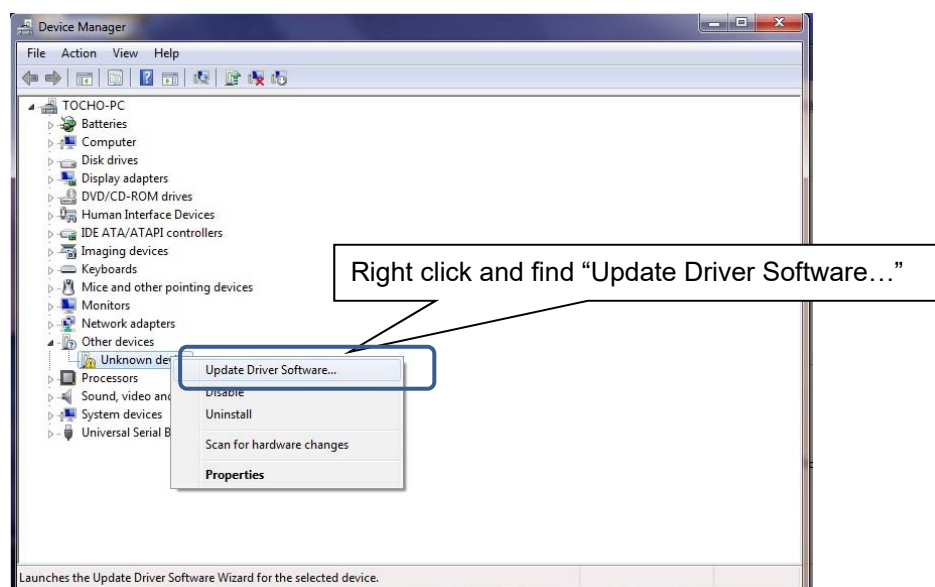
\*if you don't get these messages, skip to section 2.



2. Open "Device Manager" (from "Control Panel" → "System and Security" → "System").

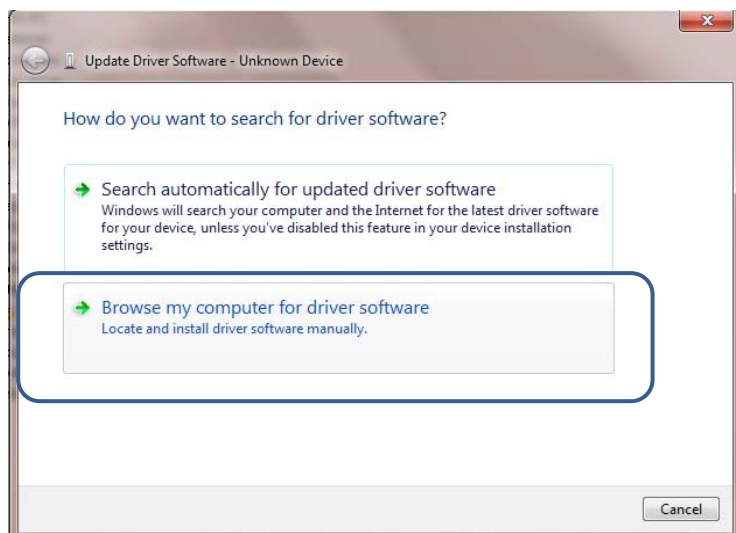


3. Find "Unknown device" and right click, find "Update Driver Software..."

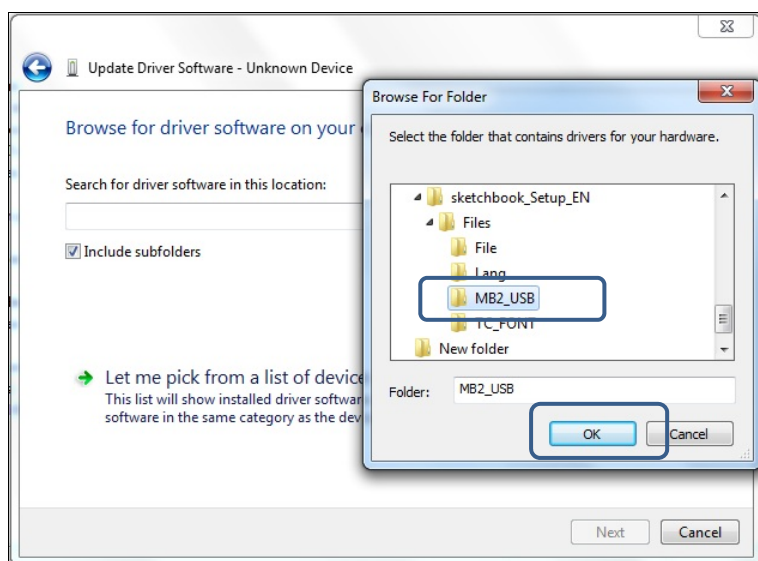
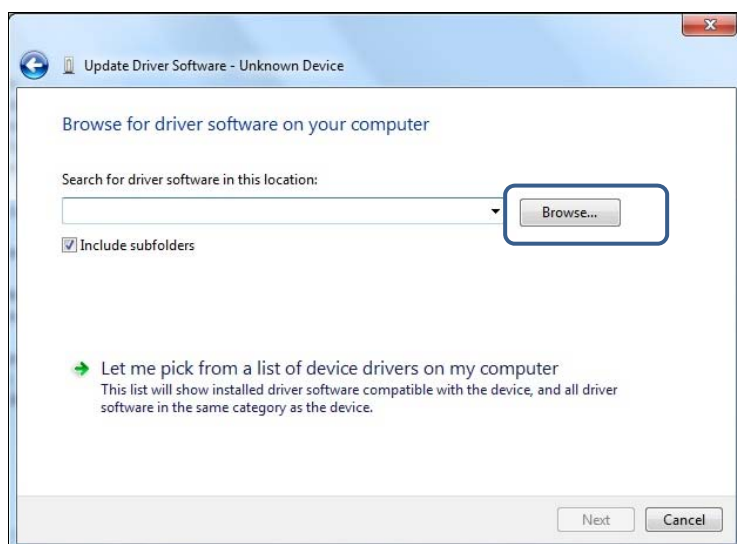




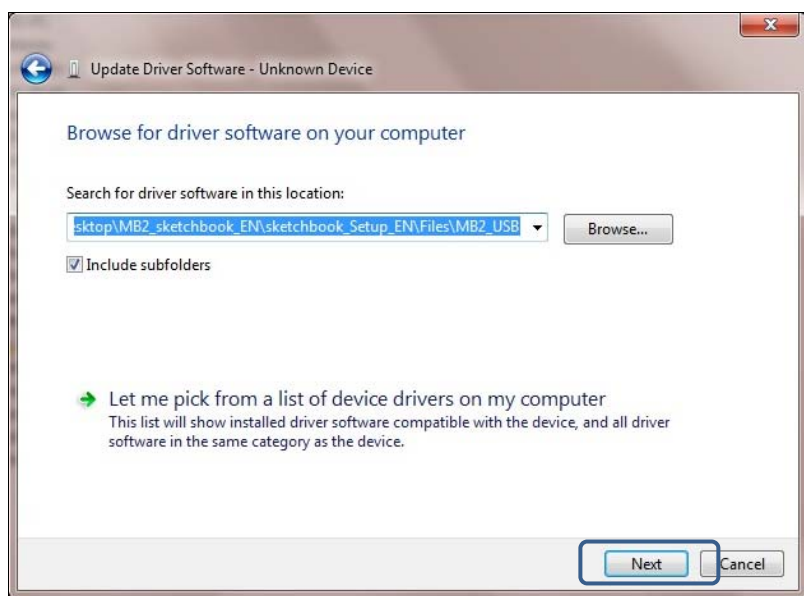
#### 4. Select "Browse my computer for driver software"



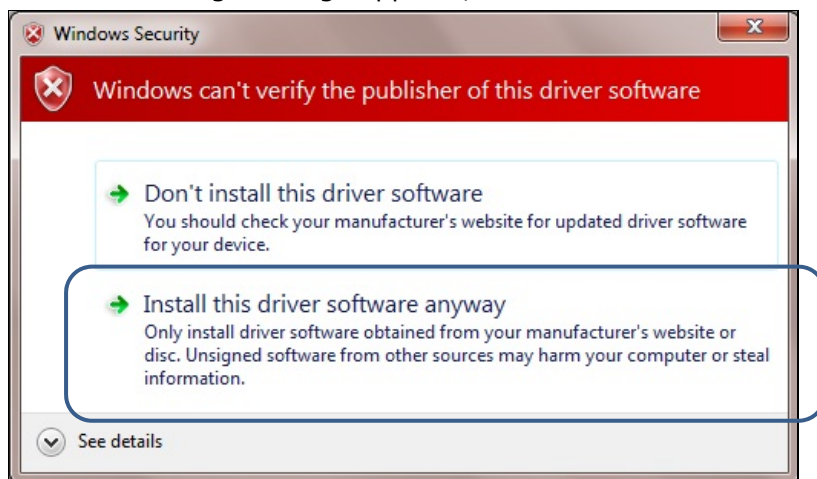
#### 5. By clicking [Browse...] button, select "MB2\_USB" folder under "sketchbook2" in the C drive.



#### 6. Click [Next] button.



7. If the warning message appears, select "Install this driver software anyway".



8. Start installing. When the installation is complete, click [Close] button.  
Check the device manager again whether the installation is successful.

